



Precise, high-quality Oxygen Administration – you can trust

Dräger

Technology for Life



Helping Your Patients Breathe Easier

Through every step of your patient's recovery, the correct dosing and oxygen therapy is key in supporting them to breathe on their own. A vital component in improving your patient outcomes and encouraging self-breathing is the accurate delivery of oxygen therapy.

With our Dräger range of flow dosage devices, you can control oxygen applications accurately and reliably. We also offer you complementing humidification systems that aid extended therapies.

Conventional Flowmeter & compact Flowmeter Clickflow

Conventional Flowmeter

- Large setting knob
- Robust metal housing
- MRI compatible



Compact Flowmeter Clickflow

- Compact
- Variegated versions





Engineered for safety and reliability

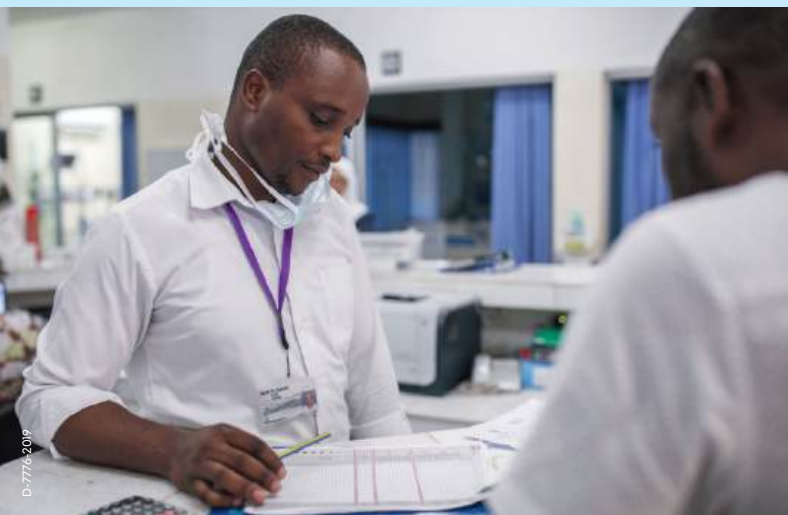
Controlling the flow rate of gases so as to give your patients the correct dosage requires dependable flowmeters to control the gases drawn from central supply systems or compressed gas cylinders. Typically used in general wards, for adult, paediatric & neonates alike, or use in anaesthesia, flowmeters are an essential part of your clinical therapy solutions. To ensure you have the appropriate dosage and measuring instruments for your clinical needs, we offer you a diverse portfolio of flowmeters. For a wide variety of gas-control uses, you can choose from our Dräger flowmeters with visual flow balls or the Clickflow Flowmeter, which gives you added compactibility and versatility. Together with our wide range of humidification and gas blender systems, our reusable and disposable accessories give you a complete therapy solution that support you to improve your clinical outcomes.

You choose – we deliver

Whether you need a more conventional flowmeter or a versatile, compact version for your therapy strategies, we believe in offering you choice according to your specific needs.

With a wide variety of models to choose from, our Dräger flowmeter portfolio is equipped to give you:

- High degree of precision.
- Clear display of the set flow.
- Large and smooth-edged control knob.
- Long intervals between maintenance care – or no maintenance need at all.
- High stability, thanks to its robust design.



Precise dosing with simplicity in mind

To help you and your staff save valuable time and optimise gas delivery to your patient, you rely on important factors when administering oxygen therapy – simplicity & accuracy. Your choice of flowmeter needs to be simple to use, easy to read, and give you a consistent flow of gas with precision, in order to fully support your patient's recovery. Our range of flowmeters have been designed with the above requirements in mind. Their large rotary control knob makes setting the correct flow-rates quick and simple and the engineering quality supplies the accuracy.



D-6372-2018

Designed for your and your patient's safety



Our Conventional Flowmeter

Quality tested – through and through

Built to last: this has been our motto through the entire development of our complete range of conventional 'ball and pressure dome' type flowmeters. Everyday use can wear down your equipment. For this specific reason, we have designed a robust housing of powder-coated aluminum to endure even the most difficult situations associated with every day use in your clinical environment. To ensure the safety of both staff and patient, we perform optimised pressure tests on the dome, so that it can withstand multiple set pressure values consistently.



D-949-2016



Technical Data

Classic Flowmeter

Input pressure	65 ± 7 psi (4.5 ± 0.5 bar)*	
Set ranges	0.5 to 4 L/min	
	2 to 10 L/min	
	2 to 16 L/min	
	4 to 32 L/min	
Accuracy of flow rate at 4.5 bar (1013 hPa/20°C)**	± 15 % (corresponding to smallest setting value)	
	± 10 % (all other setting values)	
Gas outlet	Oxygen	M34 x 1.5 and 9/16" adapter
	Medical air	M32 x 1.5
Weight	CS version	approx. 1.1 lb (500 g)
	Rail-mounted device	approx. 2.09 lbs (950 g)
Material	Housing	Aluminum
	Pressure dome	Polyamide (PACM 12)
	Flow tube	Glass
Dimensions (H x W x D)	6.3 x 1.6 x 5.1 in (160 x 40 x 130 mm)	

* 1 bar = 1 kPa x 100

** Using the flowmeter outside the specified ambient conditions could affect flow accuracy.



Gives you accuracy and simplicity – all in one



Our Clickflow Flowmeter

Compact design with maximum versatility

Because medical emergencies happen at a moment's notice, being prepared for all unexpected scenarios is critical to the patient's wellbeing. Ideal for all applications which require a fast setting of oxygen administration, our Dräger compact flowmeter, Clickflow, is extremely compact and robust. Making it exactly the right choice for your emergency medical treatments.





Technical Data

Compact Flowmeter Clickflow

Input pressure	4,5 ± 0.5 bar*
Set ranges	0.1 – 1 L/min (0; 0.1; 0.2; 0.3; 0.4; 0.5; 0.6; 0.7; 0.8; 1 L/min) 0.5 – 5 L/min (0; 0.5; 1; 1.5; 2; 2.5; 3; 3.5; 4; 5 L/min) 1 – 16 L/min (0; 1; 2; 3; 4; 6; 8; 10; 12; 16 L/min) 1 – 32 L/min (0; 1; 5; 8; 12; 16; 20; 25; 28; 32 L/min)
Accuracy (at 4.5 ± 0.5 bar)	0.5 – 5 L/min, 1 – 15 L/min and 1 – 32 L/min: ±20 %; 0.1 – 1 L/min ±30 %
Gas inlet	CS plug O ₂ or AIR, NIST (rail)
Gas outlet	6 mm nozzle for application system, 9/16" thread for sterile water or adapter for reusable humidifier
Weight	CS version approx. 0.9 lb (420g) Rail-mounted device approx. 1.5 lb (700g)
Housing material	Powder-coated aluminium
Dimensions (H x W x D)	1.5 x 3.6 x 4.6 in (38 x 92 x 118 mm)

*1 bar = 1 kPa x 100

D-941-2016

O₂ Flowmeter CS

D-944-2016

O₂ double Flowmeter CS

D-949-2016

O₂ Flowmeter rail

D-954-2016



AIR Flowmeter rail

Order information for conventional flowmeter

O ₂ – 4 liter/min, M34 x 1.5 for Dräger humidifiers. Including 9/16" (DISS) Adapter for sterile water systems	Order number
O ₂ – 4 L/min, CS; DIN	MP04551
O ₂ – 4 L/min, rail, NIST	MP04552
O ₂ – 4 L/min, rail 90°	MP04553
O ₂ – 16 liter/min, M34 x 1.5 for Dräger humidifiers. Including 9/16" (DISS) Adapter for sterile water systems	
O ₂ – 16 L/min, CS; DIN	MP04558
O ₂ – 16 L/min, CS; DIN long CS plug	MP04561
O ₂ double, 2 x 16 L/min, CS; DIN	MP04560
O ₂ – 16 L/min, CS, British Standard	MP04565
O ₂ – 16 L/min, CS, French Standard	MP04566
O ₂ – 16 L/min, CS, Swedish Standard*	MP13040
O ₂ – 16 L/min; rail, including DIN CS tube 1.5 m neutral (set)	MP04575
O ₂ – 16 L/min; rail, including DIN CS tube 1.5 m according to ISO (set)	MP04573
O ₂ – 16 L/min, rail 90°, NIST	MP04570
O ₂ – 16 L/min, rail including tube 1.2 m NIST/NIST ISO (set)	MP04574
O ₂ – 16 L/min; rail; NIST	MP04567
O ₂ double, NIST connection rail, 2 x 16 L/min	MP04569
O ₂ – 32 liter/min, M34 x 1.5 for Dräger humidifiers. Including 9/16" (DISS) Adapter for sterile water systems	
O ₂ – 32 L/min, CS; DIN	MP04571
O ₂ – 32 L/min, rail; NIST	MP04580
AIR – 16 liter/min, M32 x 1.5, for adapter	
AIR – 16 L/min, CS; DIN	MP04559
AIR – 16 L/min, long connector (6 cm), CS, DIN	MP04562
AIR – 16 L/min, CS, Swedish Standard*	MP13041
AIR – 16 L/min, rail, NIST	MP04568
AIR – 32 liter/min, M32 x 1.5, for adapter	
AIR – 32 L/min, CS; DIN	MP04572
AIR – 32 L/min, rail; NIST	MP04581
Flowmeter Central Supply coupling (Switzerland) with M34 x 1,5 connector for Dräger-humidifier and 9/16" Adapter for sterile water systems	
O ₂ – 10 L/min, CS; Carba	MP04554
O ₂ – 10 L/min, rail, NIST	MP04556
O ₂ – 16 L/min, CS, Carba	MP04563
AIR – 16 L/min, CS, Carba, M32 x 1.5 without adapter	MP04564
O ₂ double, 10 L/min, CS, Carba, 4 bar	MP04555
O ₂ double flowmeter, 2 x 10 L/min, rail, NIST	MP04557
Flowmeter for anaesthetic devices with NIST/NIST connecting hose, M34 x 1.5 connector and 6 mm sleeve	
O ₂ Flowmeter 16 L/min, NIST/NIST hose ISO 1.2 m	MP04576
O ₂ Flowmeter 16 L/min, NIST/NIST hose black, 1 m	MP04577
O ₂ Flowmeter 16 L/min 90°, NIST/NIST hose ISO 1.2 m	MP04578
O ₂ Flowmeter 16 L/min 90°, NIST/NIST hose black, 1 m	MP04579
Select tubes for rail versions from tube configuration	8601697

D-203563-2020



O₂ - DIN CS 0 - 16 L/min, 9/16" (MP13011)

D-203568-2020



O₂ - DIN CS-twin (with y-piece), 2 x 0 - 16 L/min, 9/16" (MP13014)

D-8458-2016



Adapter 9/16" to M34 x 1.5

MT-246-2000



Bubble humidifier

Order information for compact flowmeter clickflow

	Order number
Clickflow O ₂ -DIN CS 0 - 16 L/min, 9/16"	MP13011
Clickflow O ₂ -DIN CS 0 - 16 L/min, 6 mm nozzle	MP13012
Clickflow O ₂ -Rail, NIST, 0 - 16 L/min, 9/16"	MP13013
Clickflow O ₂ -DIN CS-twin (with y-piece), 2 x 0 - 16 L/min, 9/16"	MP13014
Clickflow AIR-DIN CS, 0 - 16 L/min, 9/16"	MP13015
Clickflow AIR-DIN CS, 0 - 16 L/min, 6 mm nozzle	MP13016
Clickflow AIR-DIN CS, 0 - 1 L/min, 6 mm nozzle	MP13019
Clickflow AIR-Rail, NIST, 0 - 16 L/min, 9/16"	MP13017

CS = central gas supply

Clickflow O ₂ -DIN CS 0 - 16 L/min, 9/16"	MP13000
Gas type	O ₂ Air
Mounting	CS Rail
CS connector	DIN (long or short) SS (Sweden)* Carbamed (Switzerland) BS (England) NF (France)
Design	Single compact flowmeter Dual compact flowmeter
Flow	0.1 - 1 L/min 0.5 - 5 L/min 1 - 16 L/min 1 - 32 L/min
Gas outlet	6 mm nozzle 9/16" for sterile water

Order information accessories

	Order number
M34 x 1.5 adapter to 9/16" for sterile water systems	2M86680
M32 x 1.5 adapter to 9/16" for sterile water systems	MP03366
9/16" adapter to 6 mm nozzle	MP00416
Adapter 9/16" to M34 x 1.5	MP03325
Reusable humidifier/bubbler	2M85834

Not all products, features, or services are for sale in all countries. Trademarks mentioned herein are the property of its respective owner. Trademarks may be owned by Drägerwerk AG & Co. KGaA (Dräger) or its affiliates in certain countries and not necessarily in the country in which this material is released. Visit www.draeger.com/trademarks for the current status of Dräger's trademarks.

Corporate Headquarters

Drägerwerk AG & Co. KGaA
Moislinger Allee 53–55
23558 Lübeck, Germany
www.draeger.com

Manufacturer

Drägerwerk AG & Co. KGaA
Moislinger Allee 53–55
23542 Lübeck, Germany

Region Europe

Drägerwerk AG & Co. KGaA
Moislinger Allee 53–55
23558 Lübeck, Germany
+49 451 882 0
+49 451 882 2080
info@draeger.com

Region Middle East, Africa

Drägerwerk AG & Co. KGaA
Branch Office
P.O. Box 505108
Dubai, United Arab Emirates
+971 4 4294 600
+971 4 4294 699
contactuae@draeger.com

Region Asia Pacific

Draeger Singapore Pte. Ltd.
61 Science Park Road
The Galen #04-01
Singapore 117525
+65 6872 9288
+65 6259 0398

**Region Central
and South America**

Dräger Indústria e Comércio Ltda.
Al. Pucurui - 51 - Tamboré
06460-100 - Barueri - São Paulo
+55 (11) 4689-4900
relacionamento@draeger.com



Locate your Regional Sales
Representative at:
www.draeger.com/contact