


# VacSax + Advance


## VACSAX ADVANCE RANGE OF DISPOSABLE SUCTION LINERS INSTRUCTIONS FOR USE FOR ADVANCE LINERS

### Connection and use:

Read all instructions thoroughly before attempting to use this equipment, pay special attention to warnings and precautions - these are indicated thus 

Before use check the product has not reached its use by date. This can be found printed on the liner and packaging label.

- 1 Ensure rigid canister is clean – wipe the inner rim surface with a damp cloth if necessary. **Use the correct size canister for your liner!**
- 2 Remove liner from carton, **do not attempt to unfold the liner as they self inflate.**
- 3 Place liner into rigid canister and push firmly. Check patient port is facing forward for ease of connection.
- 4 Push the taper connector on the vacuum tubing from suction controller into the vacuum port with a twisting motion.
- 5 Turn the Suction Controller to maximum and switch on the vacuum; this will inflate the liner ready for use. Once the liner has been inflated set the desired vacuum level using the suction controller.
- 6 Connect the patient tubing firmly to the patient port to ensure a good fit.

 **PRE-USE CHECK:** Confirm that suction is present at the patient tube by manually occluding the patient tube end before proceeding. Visually check that the liner has fully inflated.

### AFTER USE:

- **IMPORTANT!** Do not turn off vacuum source while disconnecting patient tubing, if system has been overfilled fluids may pass back down patient tubing!
- Remove patient tubing and fit stopper located on rim into port.
- Remove the vacuum connection and using the handles, lift the liner out of its canister.
- Dispose of vacuum tubing set if it becomes contaminated during use.
- Refer to disposal instructions.

These instructions should be used in conjunction with the instructions supplied with the product.



ISO: 9001 REGISTERED  
ISO: 13485 REGISTERED



Conforms to:  
93/42/EEC Medical  
devices directive



Single use



Important  
information

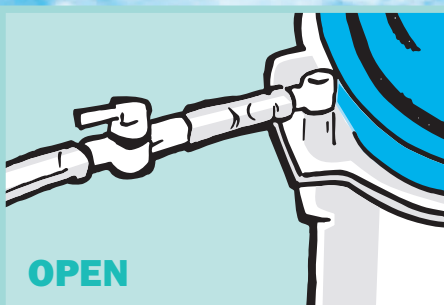
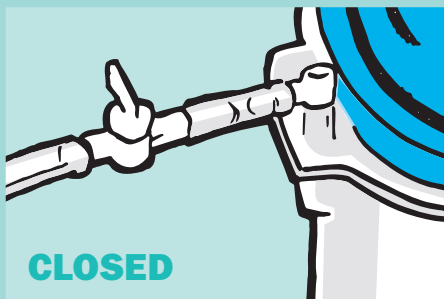
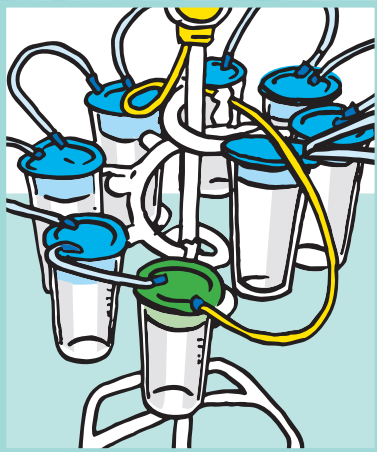
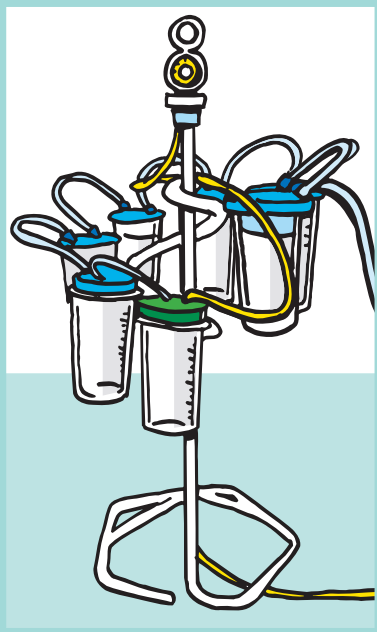


Latex Free



Packaging  
100% Recycled  
100% Recyclable


# VacSax + Advance



## INSTRUCTIONS FOR USE FOR ADVANCE CASCADE LINERS

Using a *Spiral* Heavy Duty stand up to eight 2 litre ADVANCE liners may be cascaded giving a total system volume of 16L.


### Connection and use:

Read all instructions thoroughly before attempting to use this equipment, pay special attention to warnings and precautions - these are indicated thus 

Before use check the product has not reached its use by date. This can be found printed on the liner and packaging label.

### Setting up the ADVANCE cascade liner system

- Ensure you are familiar with the set up of standard Advance
- Starting at the suction source connect the vacuum tubing with the blue taper connector to the vacuum port of the green top liner.
- Using VacSax cascade tubing, connect the patient port of the green top liner to the vacuum port of the first blue liner. Using cascade tubing connect the patient port of the first blue liner to the vacuum port of the second blue liner; continue until the last liner is reached.
- Turn on suction controller and set to maximum vacuum level. Starting at the blue top liner open the canister tap to inflate the liner. Progressively open taps to each canister inflating each in turn.
- Connect your patient tubing to the patient port of the top blue liner.

-  If canister position is not being used leave tap closed.
- Open the tap on the vacuum tubing connected to the green top liner and confirm vacuum is present by manually occluding the patient port of the last blue liner.
- Visually check all liners have fully inflated.

### PRE-USE CHECKS:

- Check all liners are firmly pushed down into canisters.
- Check all tubing connectors are push firmly onto patient and vacuum ports.

### AFTER USE

- **IMPORTANT!** Do not turn off vacuum source while disconnecting the liner system, if system has been over filled fluids may pass back down patient tubing.
- Starting at the liner with the patient tubing connected; disconnect patient tubing from the patient port. Remove the small patient port stopper from the outer rim of the Liner cap by twisting to snap-off.
- Press the stopper firmly into the patient port.
- Disconnect the cascade tubing from the Liner vacuum port and press the large yellow stopper firmly into the port, switch valve to the off position before removing the liner.
- To remove the liner from canister, use the handles on the side of the liner cap to lift the used liner carefully out of the Canister - dispose of in accordance with hospital policy.
- Repeat until green top liner is reached.
- Disconnect suction tubing from green cap liner. If tubing has been contaminated remove and replace with new tubing. Remove green top Liner from Canister - dispose of in accordance with hospital policy.
- Switch off vacuum at the suction controller.

**VacSax**<sup>®</sup>

VacSax Limited, Western Wood Way,  
Langage Science Park, Plymouth, PL7 5BG, UK.

T: +44 (0)1752 337000 F: +44 (0)1752 337600

#### Sheffield Sales Office

Provincial House, Solly Street, Sheffield, S1 4BA, UK.

T: +44 (0)114 2769810 F: +44 (0)114 2769809





# ACCESSORIES + Advance

## Canisters

- 3833-132 - 1 Litre 'V' Mount Advance Canister
- 3833-134 - 1 Litre Parallel Mount Advance Canister
- 3833-090 - 2 Litre 'V' Mount Advance Canister
- 3833-098 - 2 Litre Parallel Mount Advance Canister
- 3833-041 - 3 Litre 'V' Mount Advance Canister
- 3833-042 - 3 Litre Parallel Mount Advance Canister
- 3833-055 - 2 Litre Advance Cascade 'V' Mount Canister
- 3833-058 - 2 Litre Advance Cascade Parallel Mount Canister

## Vacuum Tubing

- 4160-007 - 1m Yellow Vacuum Tubing Set
- 4160-002 - 2m Yellow Vacuum Tubing Set

## Tissue Collection/Sample

- 9410-001 - Tissue Collection Device Pack of 12
- 9970-006 - Critical Measuring Vessel Pack of 12
- 9970-007 - Sample Sock Pack of 50

## Tubing Adaptors (for different size patient tubing)

- 9910-040 - Tubing Adaptor pack of 30

## Disposal

- 2940-035 - Disposal Bin (Rigid Plastic) up to 7 Liners Pack of 10
- 2940-036 - Disposal Box for up to 6 x 1L or 2 L Liners Pack of 10
- 9940-340 - Disposal Box for up to 2 x 1L or 2 L Liners Pack of 10
- 9310-341 - Disposal Box for up to 3 x 3L Liners Pack of 10

## Pipeline Protection

- 9510-100 - Pipeline Protector (Filter) Bacterial Pack of 10
- 3786-024 - Viral Filter Pack of 10



All liners manufactured by VacSax are made from High Density PE and do not contain any PVC and produce only carbon dioxide and water upon 100% combustion helping to save the environment.

Every effort has been made to ensure the accuracy of information contained within this literature. However freedom from errors and omissions cannot be guaranteed. VacSax policy is one of continued product improvement. The company reserves the right to change the information contained herein without prior notice.



Certificate No. 542  
ISO 9001:2008 & ISO 13485:2003



All VacSax products are CE marked



Class 1 Measuring Applies only to CMV



Western Wood Way, Lantage Science Park,  
Plymouth PL7 5BG United Kingdom  
T: +44 (0)1752 337000  
E: sales@vacsax.com



# RANGE + Advance

## Disposable Suction Liners

The **Advance Range** from VacSax is a closed disposable suction system, the ideal choice for all areas within the Hospital. **Advance** is available in 1 Litre, 2 Litre and 3 Litre versions.

Careful consideration was given to the design ensuring users have the most easy to use and safe product. Designed with just two Ports, patient and vacuum, both of different dimensions ensuring cross connection is eliminated.

Each Liner with the exception of the cascade version has a hydrophobic bacterial shut off valve located in the cap for complete overflow protection.

The unique patented design of the bag is folded for ease of storage and begins to inflate immediately the vacuum is attached. After use the integral carry handles on the liner allows for the safe removal from the canister and the bag will stand upright whilst full of fluid.

Within the **Advance** range is the **GelSax Advance** PreGelled Liner. This liner has exactly the right amount of **PreGel** which will quickly solidify the contents of the liner.

**PreGel** has been formulated not to expand when wet, giving the user confidence in the approximate volume of the Liner.



[www.vacsax.com](http://www.vacsax.com)



# Advance

## VacSax Advance

Part Number

- 9910-340 - 1 Litre Advance Liner Box of 25
- VAL - 201 - 2 Litre Advance Liner Box Of 30
- VAL - 301 - 3 Litre Advance Liner Box of 20

- VAL - 203 - 2 Litre Advance Cascade Liner Box of 30 including 30 cascade tubing sets
- VAL - 303 - 3 Litre Advance Cascade Liner Box of 20 including 20 cascade tubing sets

- 9910-350 - 4 Canister Advance Cascade Stand including Suction (others available on request)



# GELSAX Advance

## GelSax Advance Pre-Gelled Liner

Liners with just the right amount of PreGel

- 9810-340 - 1 Litre GelSax Advance Liner Box of 25
- GAL - 211 - 2 Litre GelSax Advance Liner Box of 30
- GAL - 311 - 3 Litre GelSax Advance Liner Box of 20

- GAL - 213 - 2 Litre GelSax Advance Cascade Liner Box of 30 including 30 cascade tubing sets
- GAL - 313 - 3 Litre GelSax Advance Cascade Liner Box of 20 including 20 cascade tubing sets

- 9910-350 - 4 Canister Advance Cascade Stand including Suction (others available on request)

